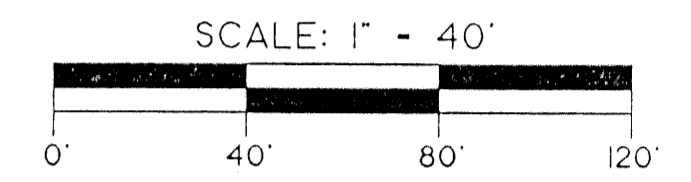
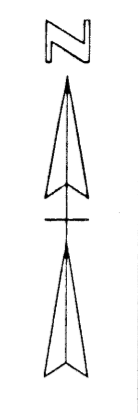
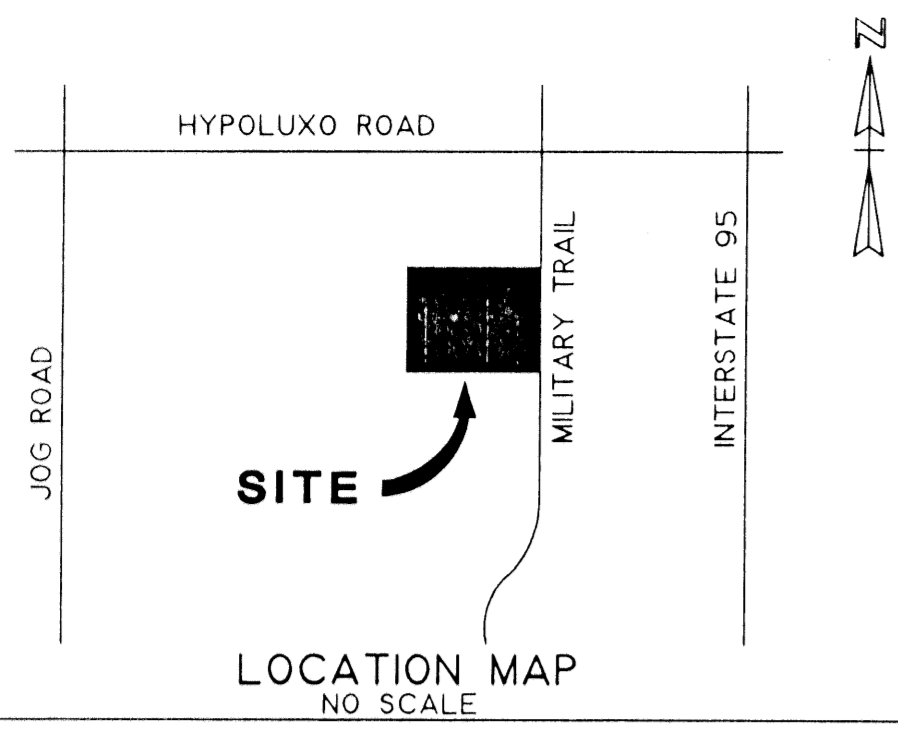


MILITARY 10

BEING A REPLAT OF A PORTION OF TRACT 16, OF THE NORTHWEST QUARTER (N.W.1/4), MARY A. LYMAN AMENDED PLAT OF SECTION 12, TOWNSHIP 45 SOUTH, RANGE 42 EAST. (PLAT BOOK 9, PAGE 74) PALM BEACH COUNTY, FLORIDA.

SHEET 2 OF 2

TRACT 9
PLAT BOOK 9, PAGE 74
678.45'
S.89°58'42"E.



PLAT BOOK 9, PAGE 74

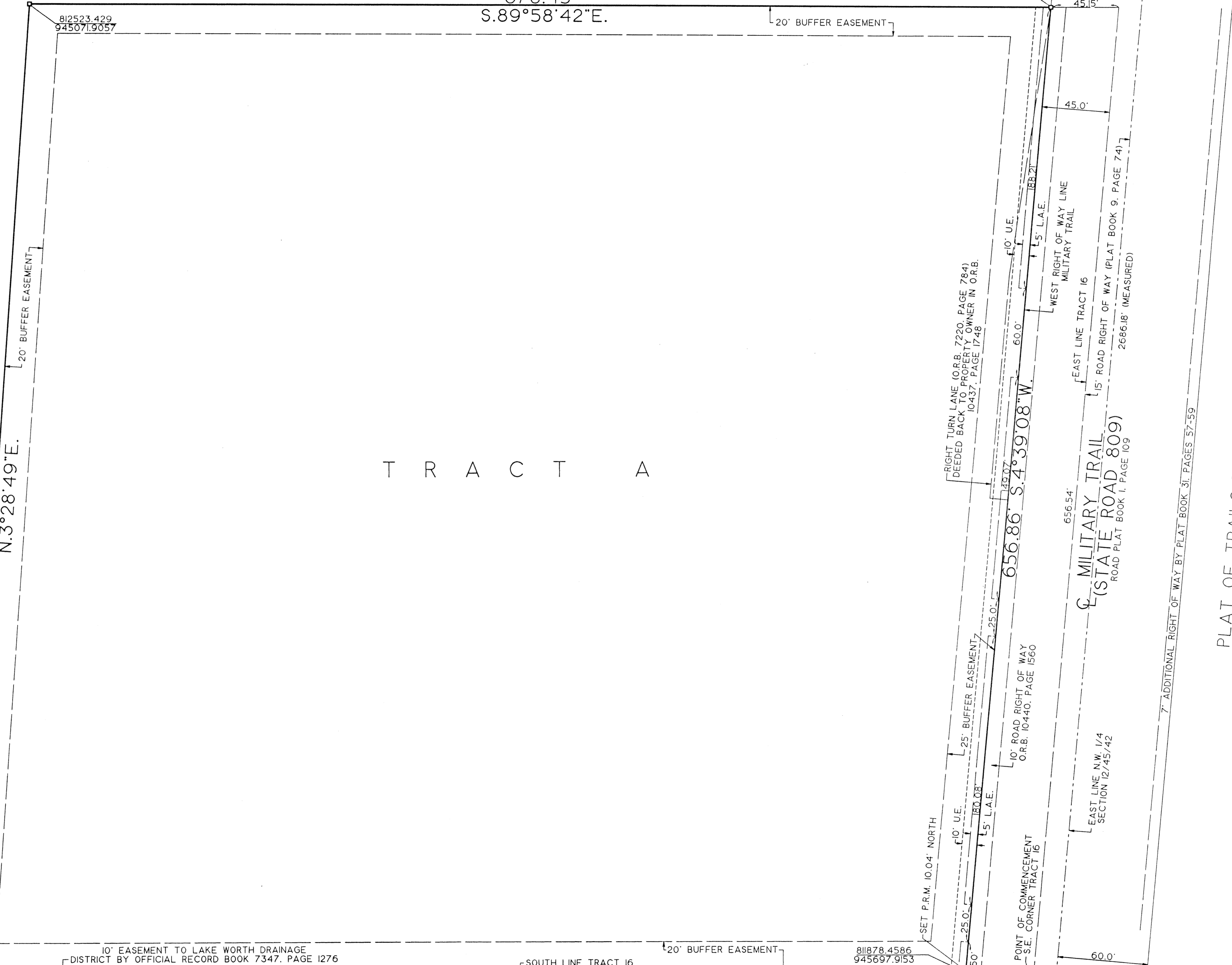
660.66'
N.3°28'49"E.

T R A C T A

812523.429
9450719057

812523.1724
945750.3803

NORTH 1/4 CORNER
SECTION 12/45/42
FOUND PALM BEACH
COUNTY DISK



20' BUFFER EASEMENT

20' BUFFER EASEMENT

RIGHT TURN LANE (O.R.B. 7220, PAGE 784)
DEDDED BACK TO PROPERTY OWNER IN O.R.B.
10437, PAGE 1749

WEST RIGHT OF WAY LINE
MILITARY TRAIL
WEST LINE TRACT 16
15' ROAD RIGHT OF WAY (PLAT BOOK 9, PAGE 74)

MILITARY TRAIL
(STATE ROAD 809)
ROAD PLAT BOOK 1, PAGE 109

7' ADDITIONAL RIGHT OF WAY BY PLAT BOOK 31, PAGES 57-59

PLAT OF TRAILS-END PLAZA
PLAT BOOK 31, PAGES 57-59

81863.9694
945031.7993

10' EASEMENT TO LAKE WORTH DRAINAGE
DISTRICT BY OFFICIAL RECORD BOOK 7347, PAGE 1276

665.30' S.89°36'50"W.

SOUTH LINE TRACT 16

20' BUFFER EASEMENT

81878.4586
945697.9153

SET P.R.M. 10.04' NORTH

10' U.E.

25' U.E.

15' L.A.E.

POINT OF COMMENCEMENT
S.E. CORNER TRACT 16

10' ROAD RIGHT OF WAY
O.R.B. 10440, PAGE 1560

15' L.A.E.

60.0'

60.0'

60.0'

FOUND CROSS CUT
(NO NUMBER AT
CENTER OF SECTION)

81836.346
945696.626

FOUND PALM BEACH
COUNTY BRASS DISK
"CART"

809419.72
940231.828

S.89°41'00"W.

2668.46' (GROUND)

S.89°41'00"W.

34.45'-16' (GROUND)

S.89°41'00"W.

56.0'

FOUND PALM BEACH
COUNTY BRASS DISK
S.W. CORNER SECTION
12/45/42

809156.721
942900.347

SOUTH LINE OF N.W.1/4
OF SECTION 12/45/42

CANAL RIGHT OF WAY
(PLAT BOOK 24, PAGE 125)

56.0'

4213' (GROUND)
S.1°45'13"W.

FOUND PALM BEACH
COUNTY BRASS DISK
"PRINGLE"

2664.28' (GROUND)
S.3°24'28"W.

60.0'

60.0'

60.0'

60.0'

60.0'

60.0'

60.0'

60.0'

60.0'

60.0'

60.0'

60.0'

60.0'

60.0'

60.0'

60.0'

60.0'

60.0'

60.0'

60.0'

60.0'

60.0'

60.0'

60.0'

60.0'

60.0'

60.0'

60.0'

60.0'

LAKE WORTH DRAINAGE DISTRICT
LATERAL CANAL 19

2637.98' S.89°33'59"W.

SOUTH LINE SECTION 12/45/42

NOTES:

- ⊕ - CENTERLINE
- ⊠ - SET PERMANENT REFERENCE MONUMENT (P.R.M.) (#5708)
- SCALE FACTOR - 1.0000363
- O.R.B. - OFFICIAL RECORD BOOK
- SECTION 12/45/42 - SECTION 12, TOWNSHIP 45 SOUTH, RANGE 42 EAST.
- P.O.B. - POINT OF BEGINNING
- L.A.E. - LIMITED ACCESS EASEMENT
- U.E. - UTILITY EASEMENT

O'BRIEN, SUITER & O'BRIEN, INC.
LAND SURVEYORS

CERTIFICATE OF AUTHORIZATION #LB353
SURVEYOR AND MAPPER IN RESPONSIBLE CHARGE: JOHN N. SUITER
2601 NORTH FEDERAL HIGHWAY, DELRAY BEACH, FLORIDA 33483
(561) 276-4501 732-3279 FAX 276-2390

DATE	MAY 1998	SCALE	1" = 40'
FIELD BOOK	PAGE NO. 159	SHEET 2 OF 2	ORDER NO. 95-49db"PL"

SUBDIVISION Military 10
PAGE 72
FLOOD MAP # 190 B
ZONING AUPO
QUAD # 34
SE 89-115
TAZ 43
PID NAME Military 10